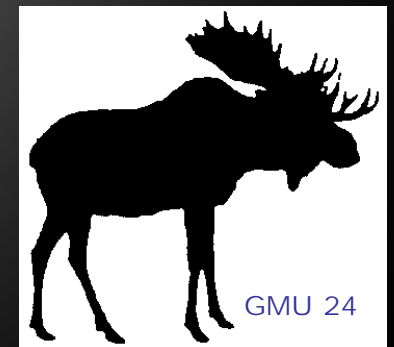
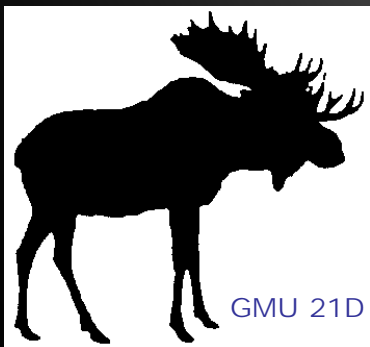


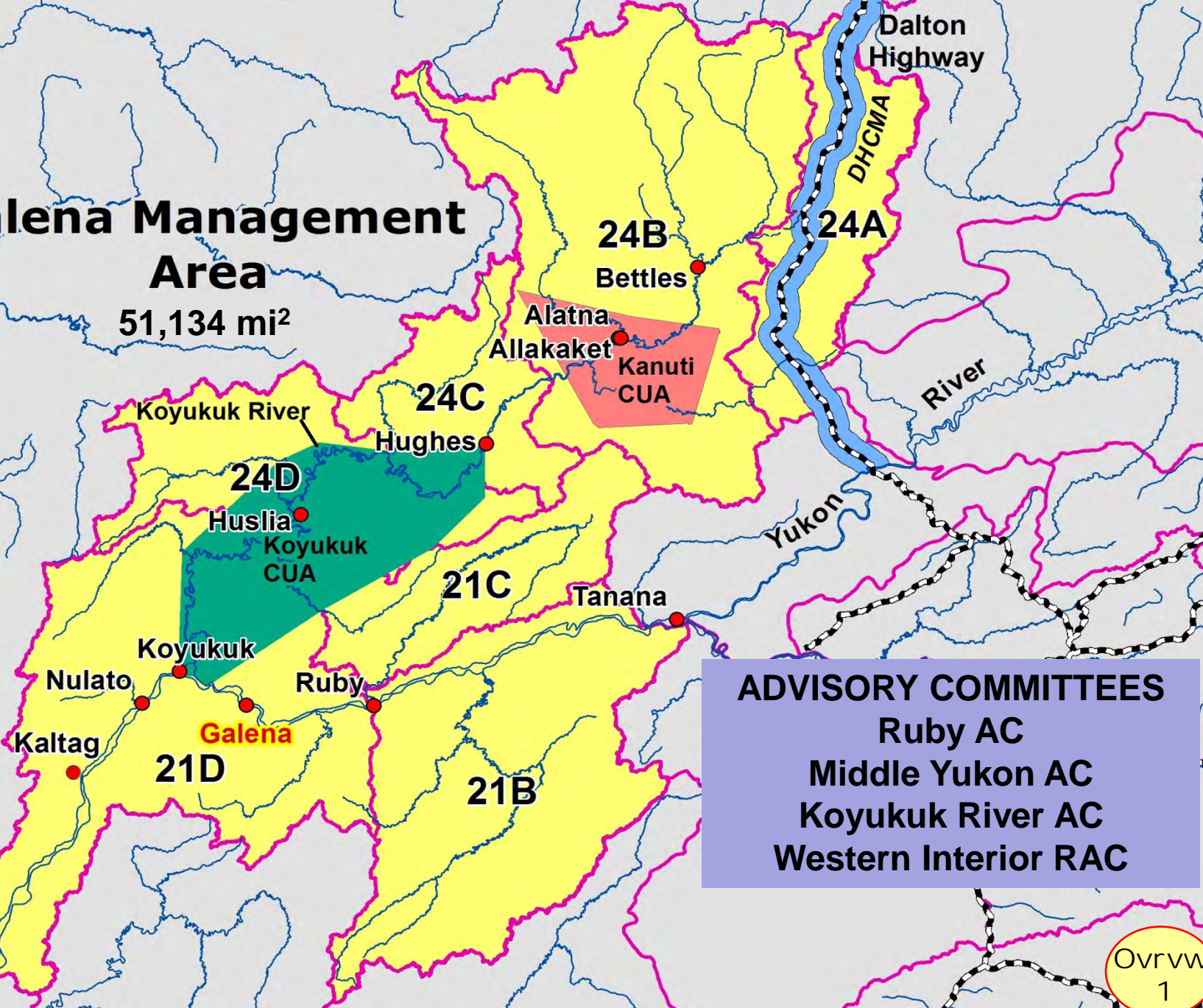
Galena Management Area Overview

Glenn Stout – Area Biologist
Nate Pamperin – Asst. Area Biologist
Stephanie Sweetsir – Off. Asst.



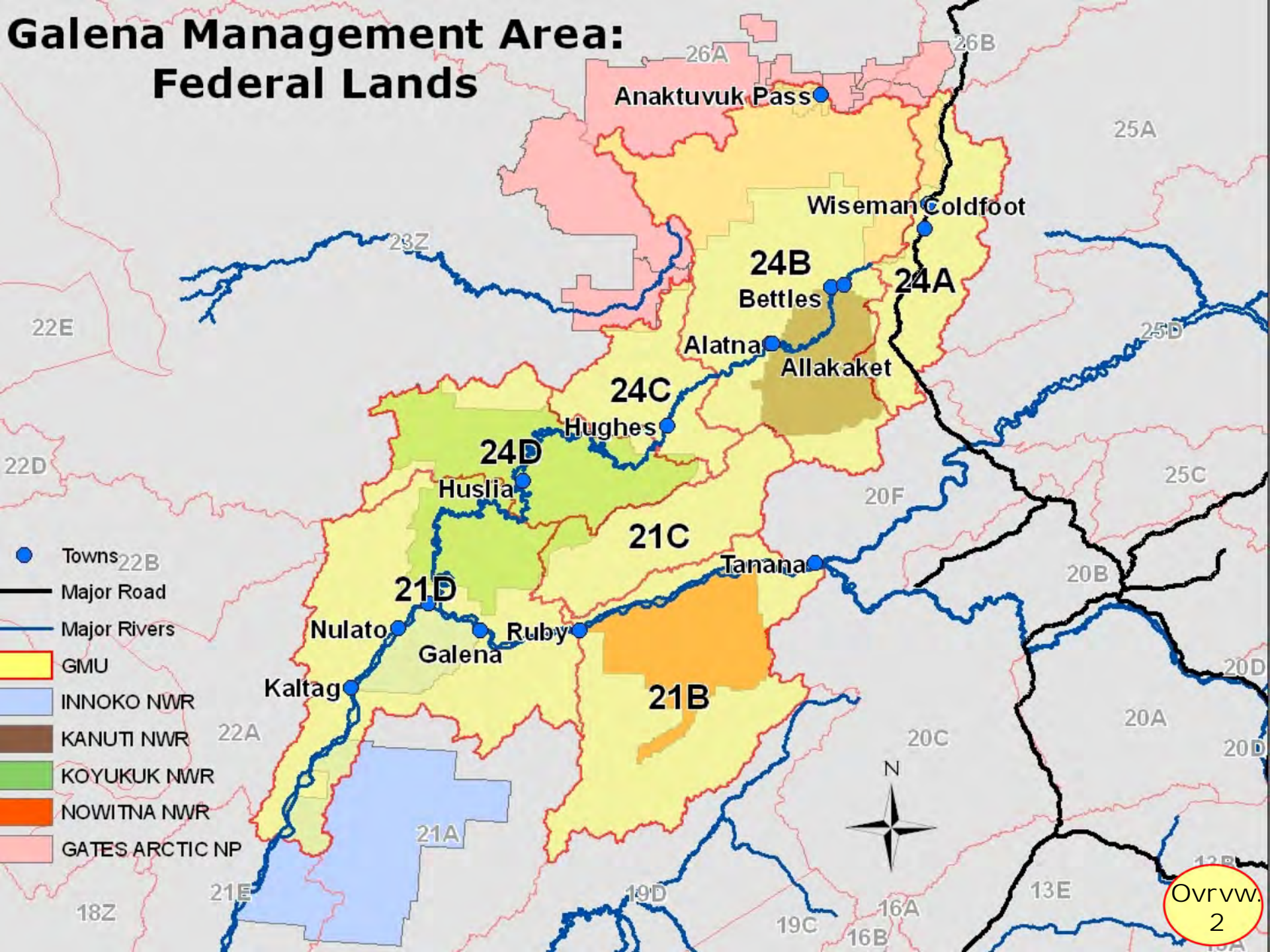
Galena Management Area

51,134 mi²




ADVISORY COMMITTEES
Ruby AC
Middle Yukon AC
Koyukuk River AC
Western Interior RAC

Galena Management Area: Federal Lands

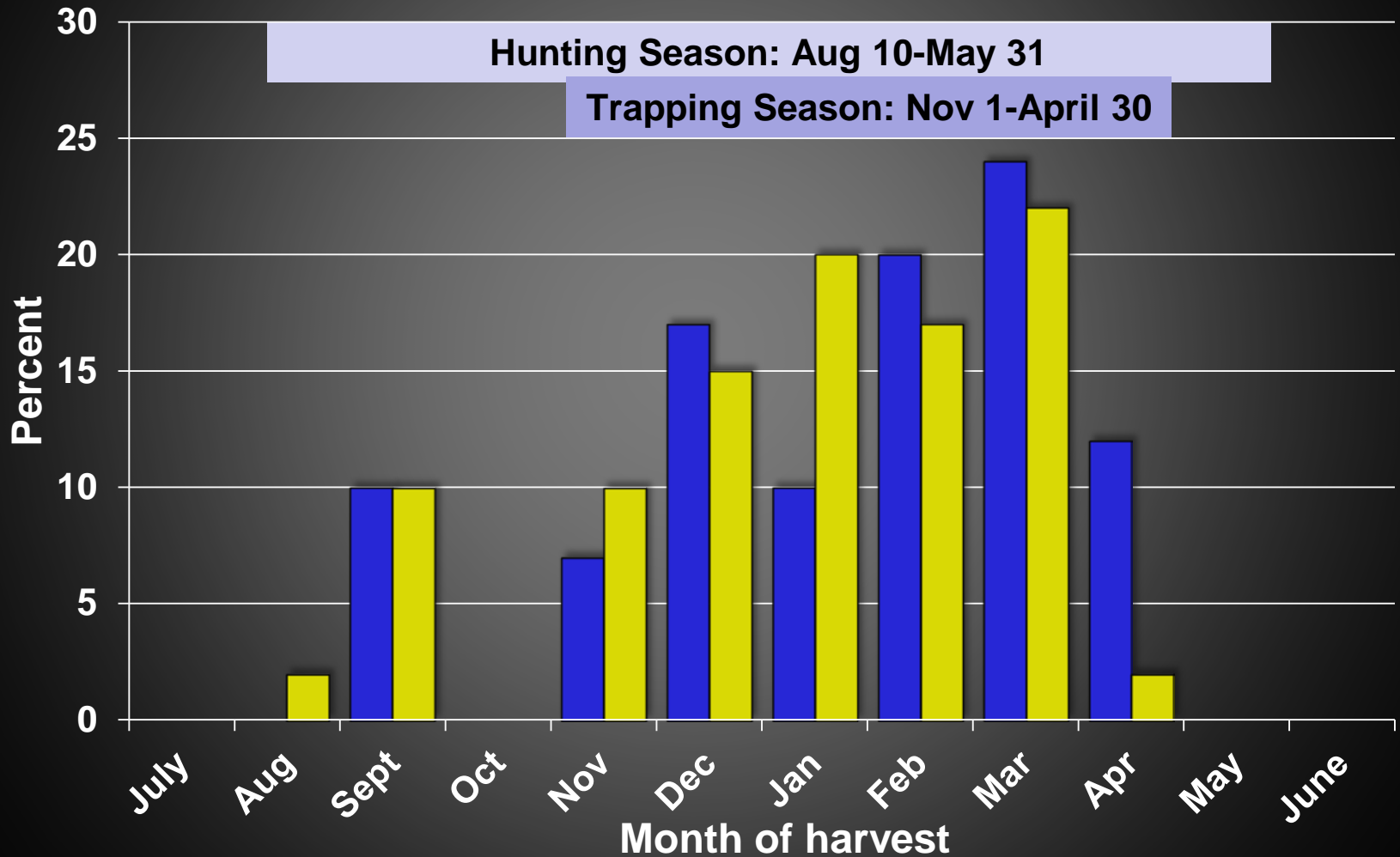


Galena Area Overview

<u>Species</u>	<u>Status</u>	<u>Proposals</u>
Black Bears	Declining?	0
Grizzly Bears	Stable?	1
Caribou	Declining	0
Moose	Stable-declining	4 
Sheep	Stable (rebounding)	0
Furbearers	Stable	0
Small Game	Stable (up cycle)	0
Wolves	Stable	2

Galena Area Overview

Wolf Harvest Percent by Month (RY05-RY15 avg.)



■ Units 21BCD (avg=41 wolves/yr)

■ Unit 24 (avg=40 wolves/yr)

Galena Area Overview

Management Priorities

- Intensive Management in 24B (UKMA)
- Moose declines in Lower Koyukuk and Lower Nowitna
- FWS and NPS rule-making
- Harvest data age-structure analysis

Galena Area Moose Surveys 1999-2015

35,320 mi²/51,134 mi² = 69%

Legend

 GMU

Number of Observed
Moose

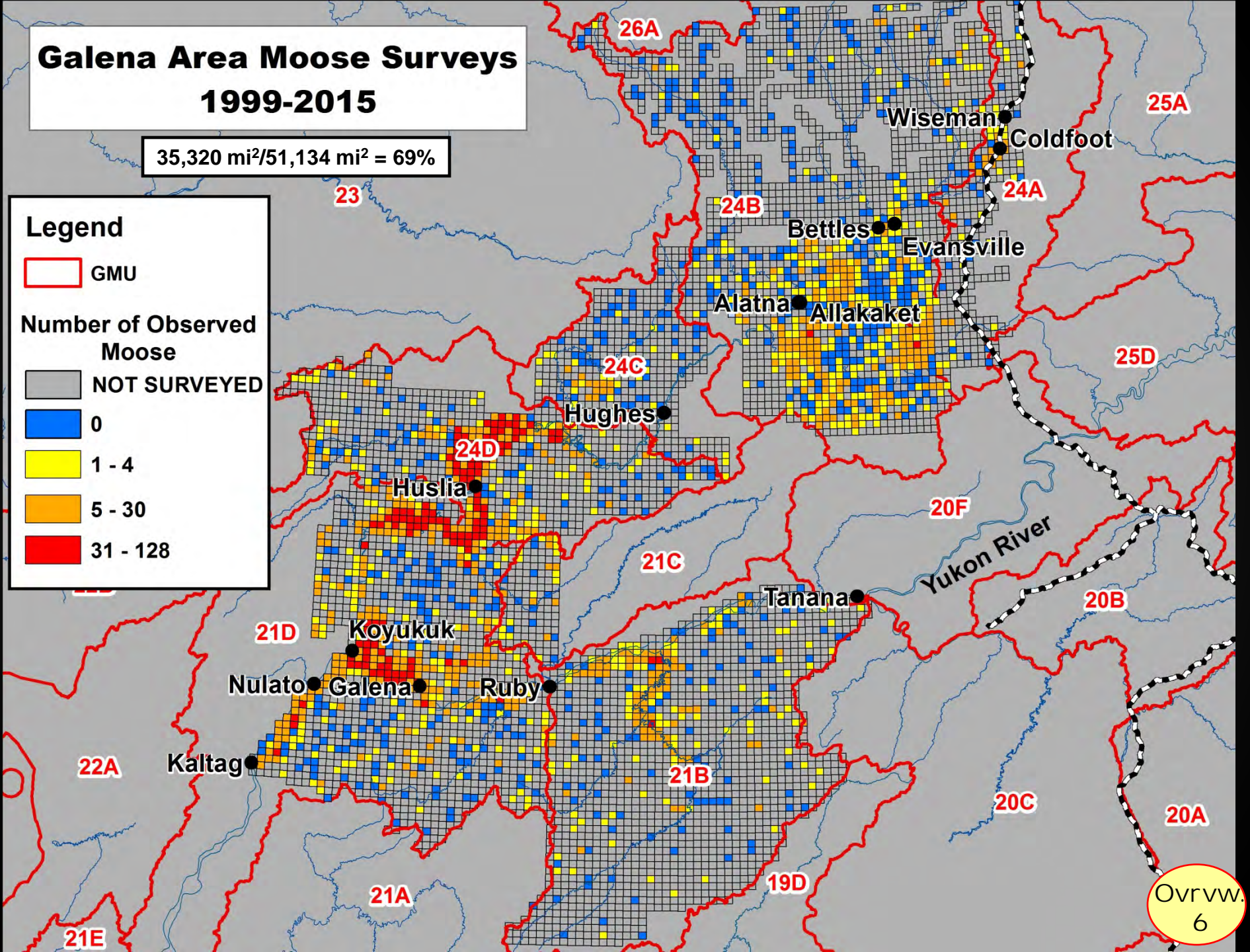
 NOT SURVEYED

 0

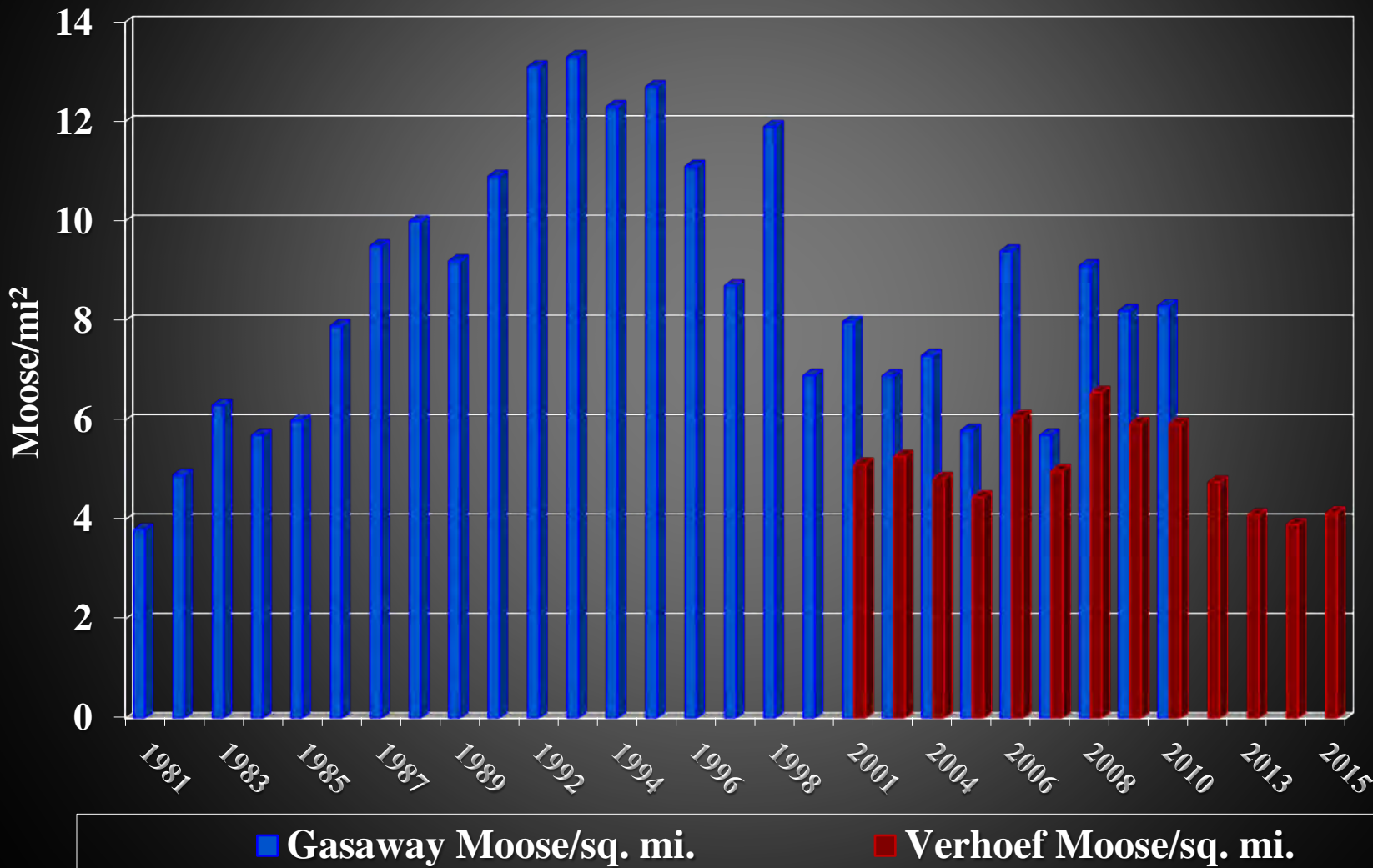
 1 - 4

 5 - 30

 31 - 128

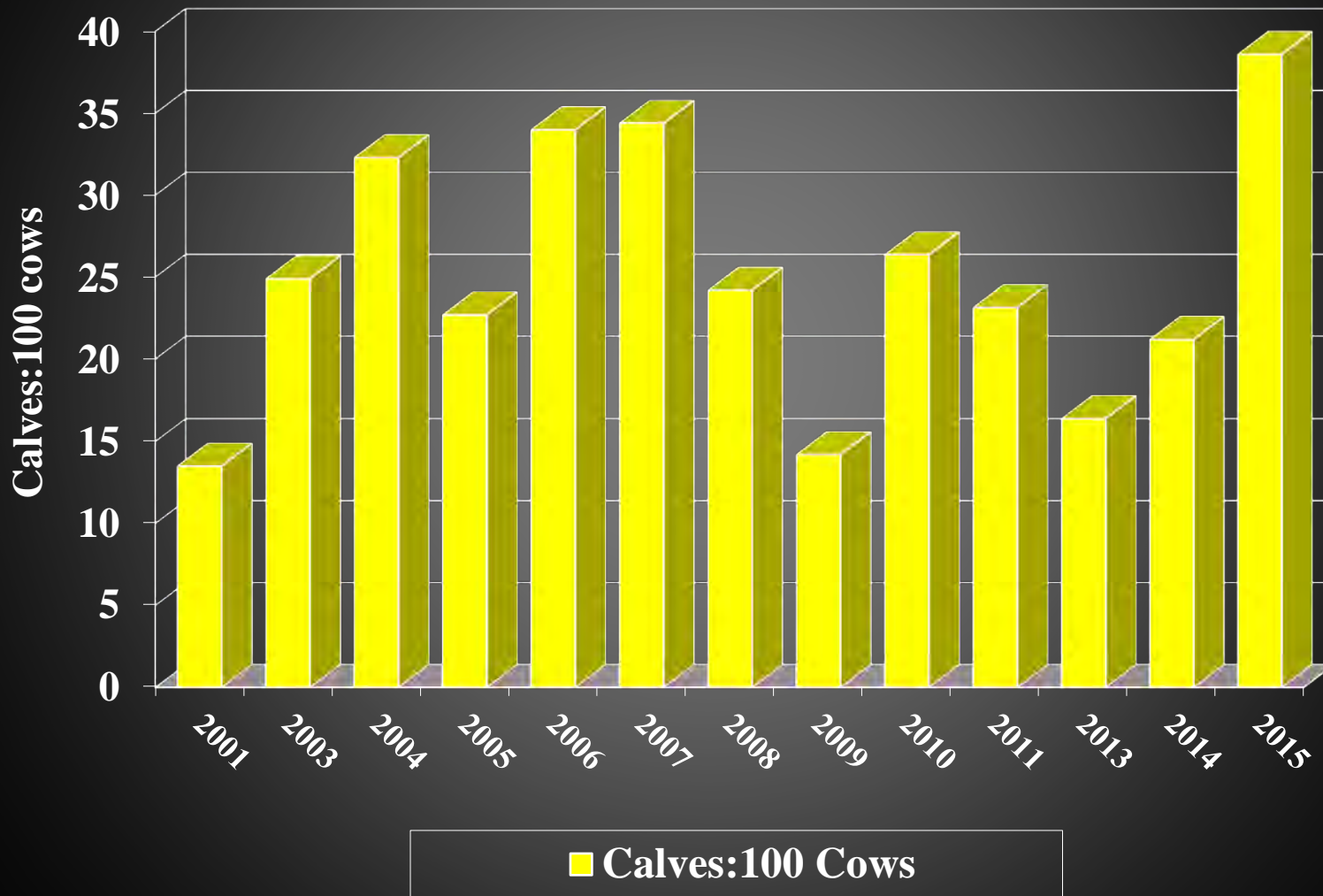


GMU 21D - Three-Day Slough Trend Count Area, Aerial Survey Density



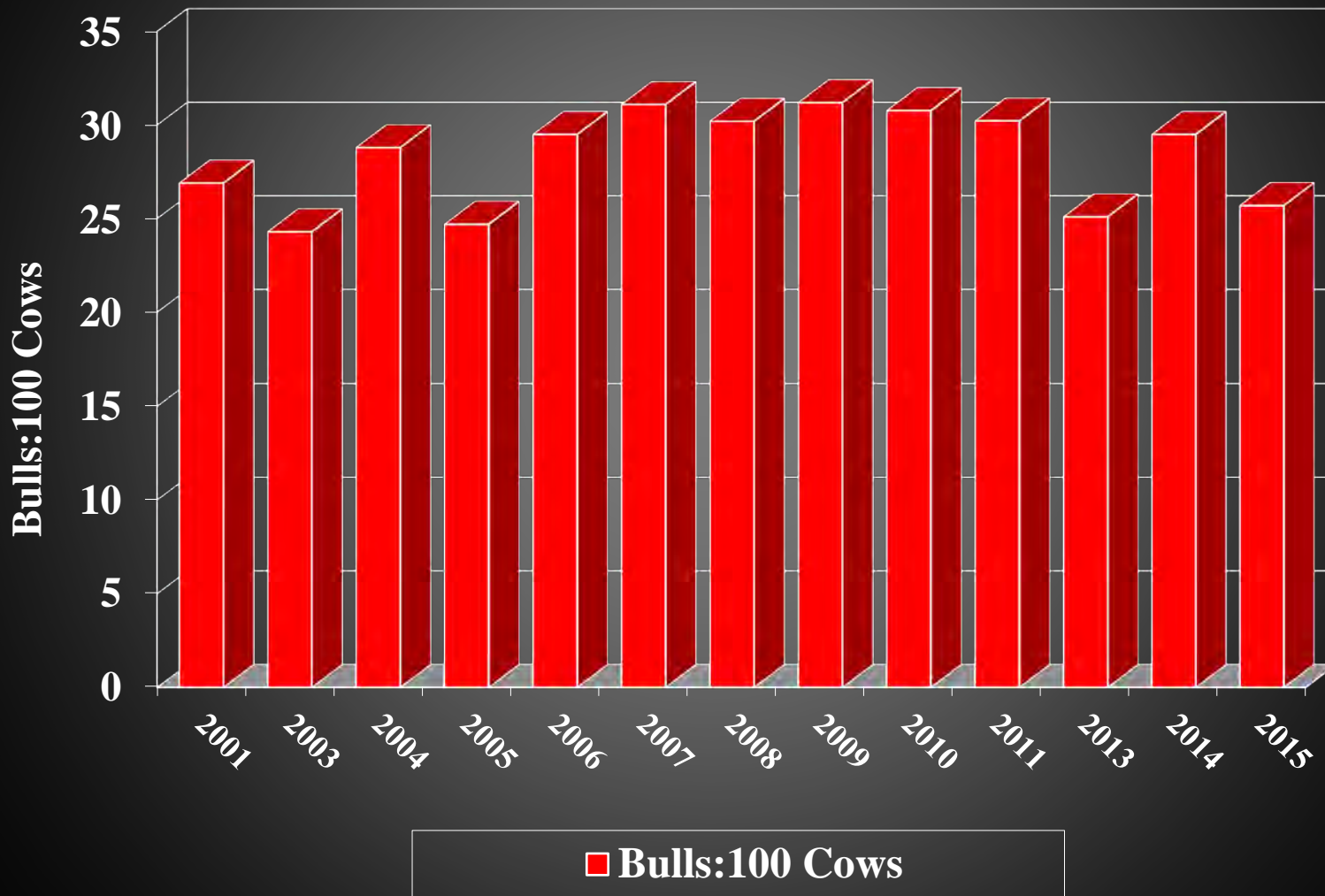
GMU 21D - Koyukuk Controlled Use Area - "Core 5" Trend Count Areas

Calves:100 Cows



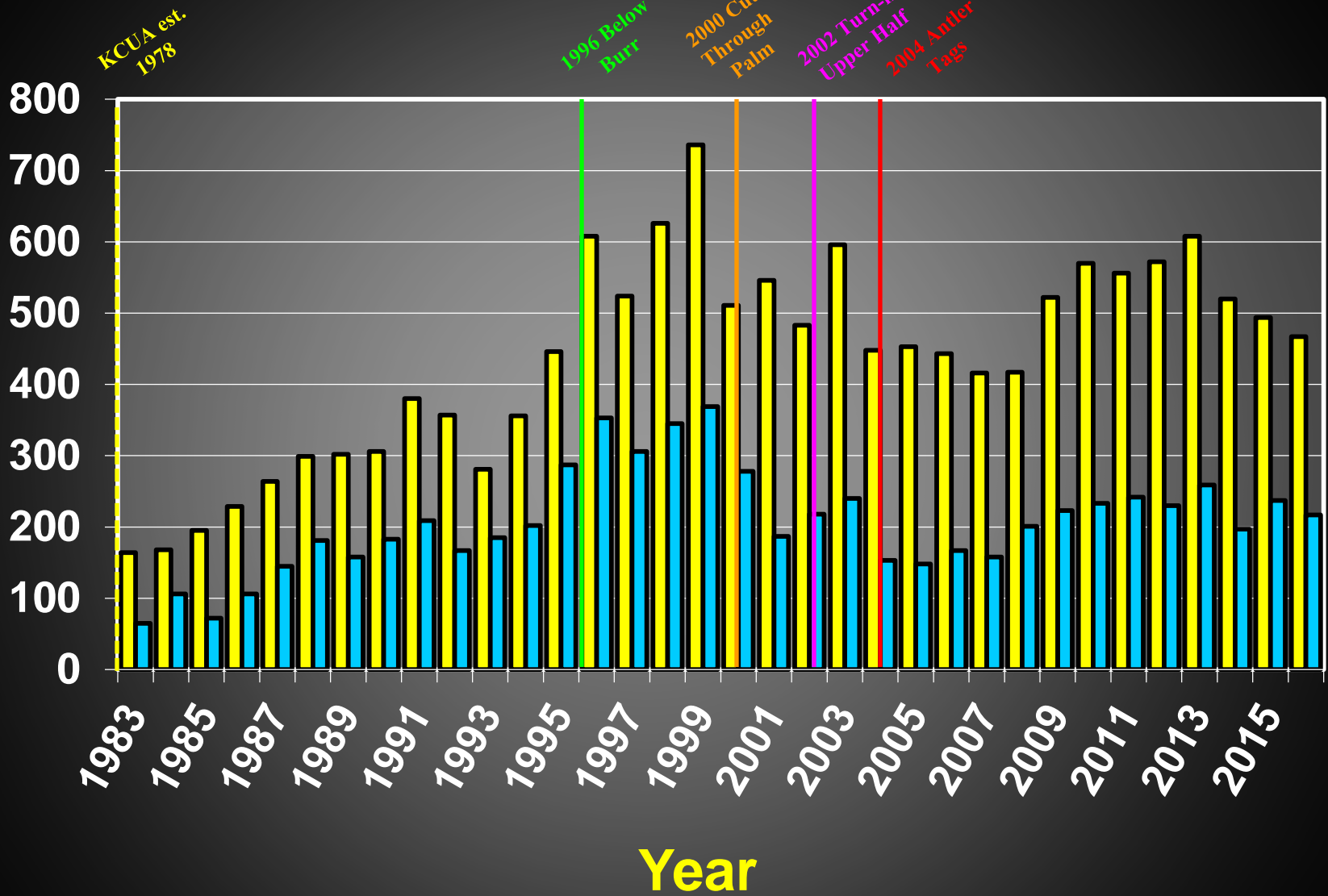
GMU 21D - Koyukuk Controlled Use Area - "Core 5" Trend Count Areas

Bulls:100 Cows



KCUA Check Station 1983-2016

Number of Hunters & Moose

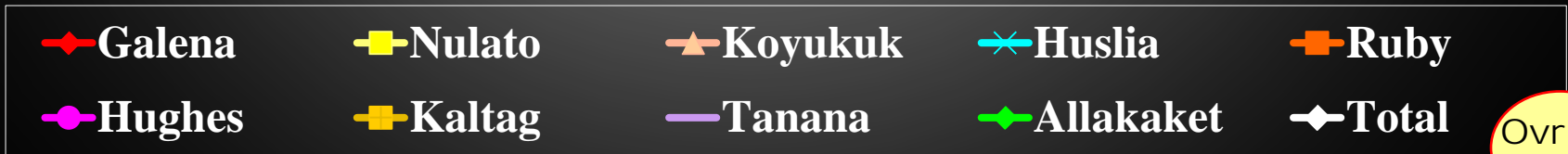
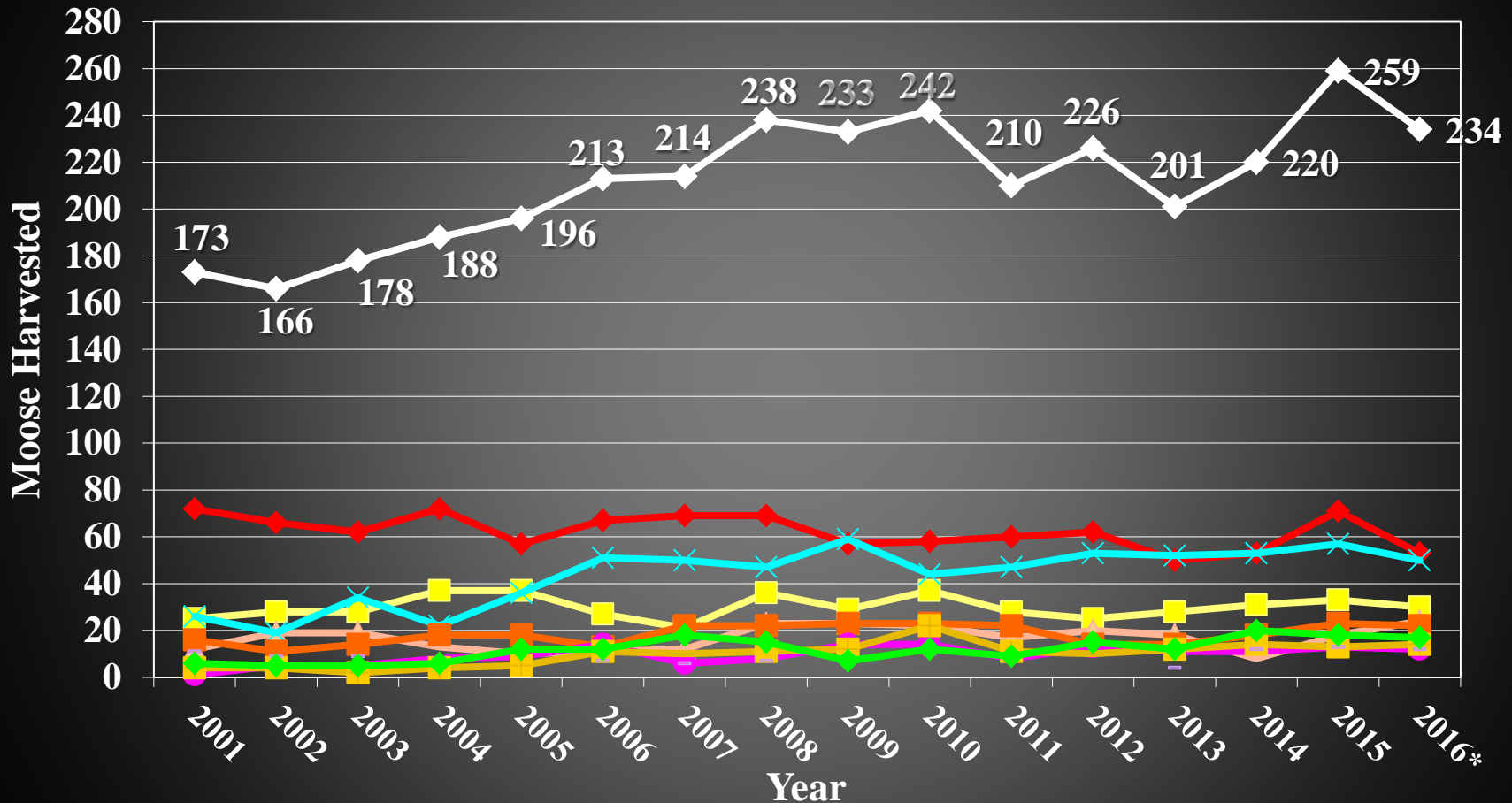


■ Hunters

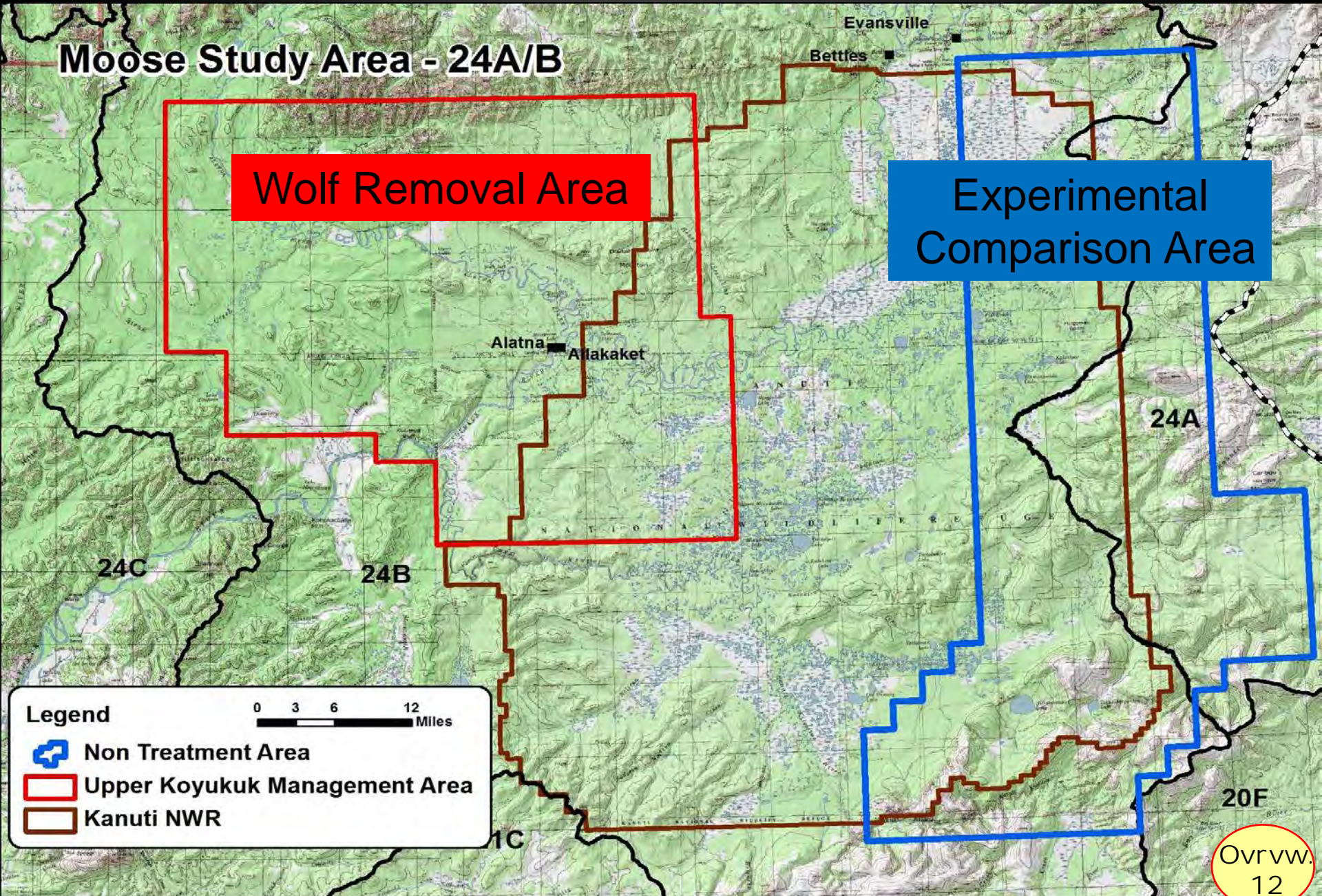
■ Moose

Preliminary ^(2/8/17) Local Resident Reported Moose Harvest

2001-2016




Intensive Management - 24B UKMA




Wolf Control

- 2013 - 23 wolves
 - 2015 - 26 wolves
 - 2016 - 10 wolves
- 59 Total**

Upper Koyukuk Wolf Control GMU 24B-2013 - 2016

 Upper Koyukuk Mgmt. Area

 2013 Locations

 2015 Locations

 2016 Locations

0 2.5 5 10 Miles



Land Status

 Bureau of Land Management

 Fish and Wildlife Service

 Military

 National Park Service

 Native Patent or IC

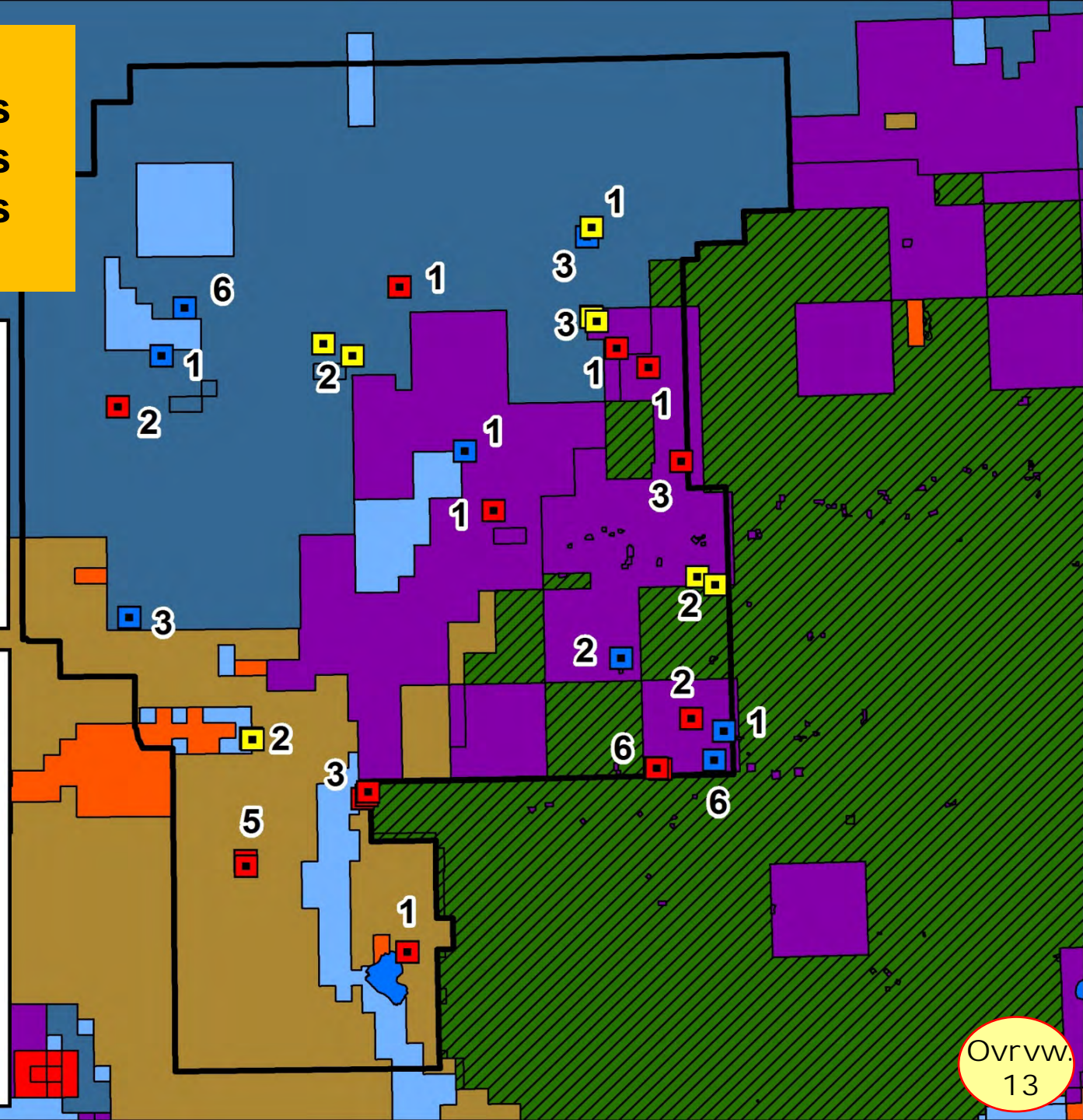
 Native Selected

 Private

 State Patent or TA

 State Selected

 Water



24B Upper Koyukuk Management Area

- Activities Completed 2011-16
 - Subsistence Household Harvest Surveys

RY	(1) Allakaket/Alatna Household Surveys ^a				(2) Harvest Reports ^b			(3) UKMA Calculated Harvest ^e
	“Catch-per-unit-effort”			Estimated Harvest ^c	Allakaket /Alatna harvest ^c	24B Harvest (all other hunters)	24B Total Harvest ^d	
	Miles per Trip	Cost per Trip	Hours per Trip					
2011	62	\$94	13	16	4	28	31	16
2012	61	\$97	15	19	13	24	33	16
2013	65	\$102	18	12	3	24	27	10
2014	63	\$119	16	20	12	37	49	14
2015	37	\$172	19	18	7	27	34	n/a
2016*	n/a	n/a	n/a	17	12	17	24	n/a

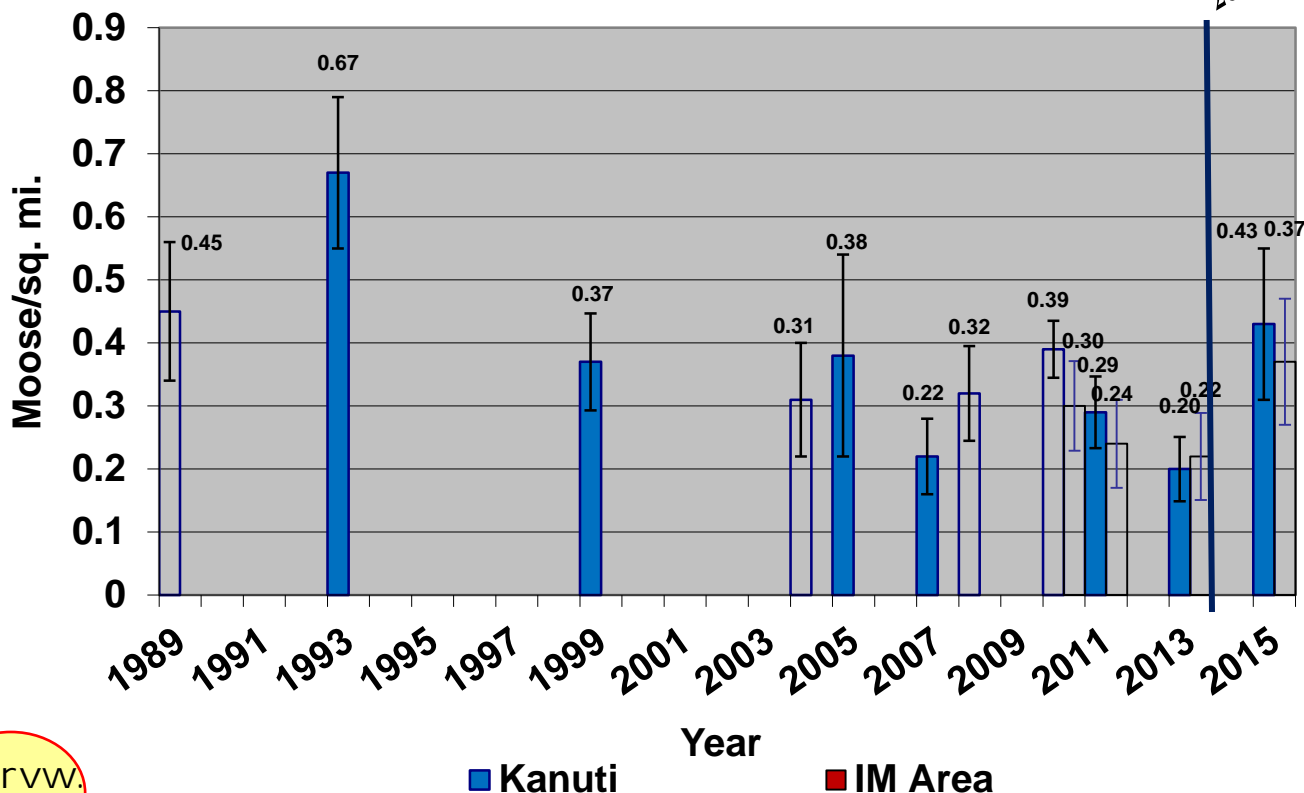
- Moose Twinning Rate/Population Estimation Surveys
- Calf and Yearling Survival Rate
- Wolf Control

24B Upper Koyukuk Management Area

Moose Population/Twinning Surveys

24B Moose Density Estimates

Moosepop '89 & '93, w/o SCF in '93, GSPE in '99 through '15



Twinning Rates (%)

2008	35
2009	60
2010	58
2011	37
2012	52
2013	43

2015 Results

62 Bulls:100 Cows

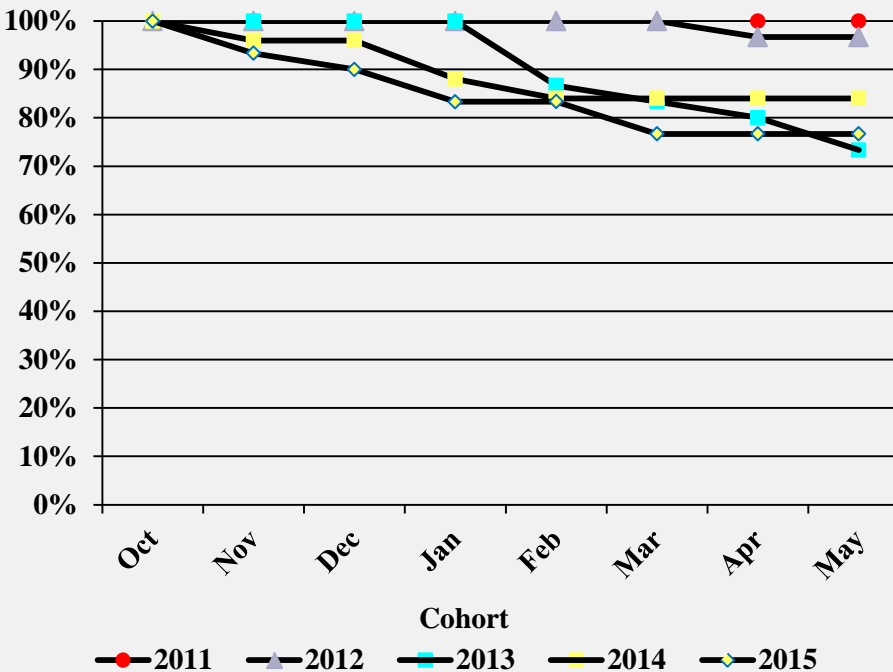
10 Yrlg bull:100 Cows

52 calv.:100 Cows

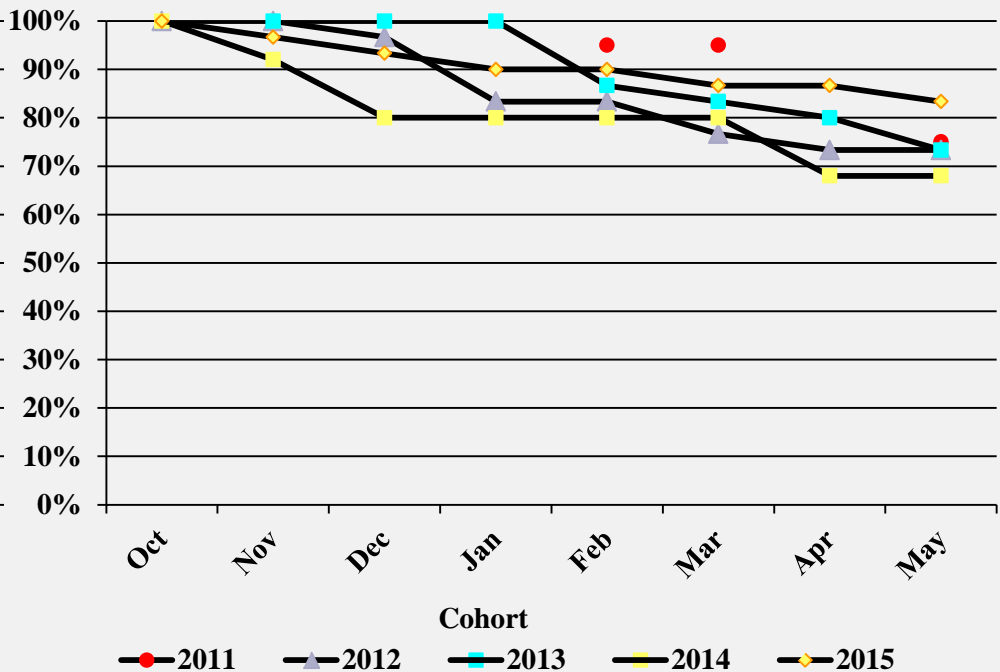
24B Upper Koyukuk Management Area

Preliminary CALF Survival Rate Assessment

Calf Survival - With Wolf Control



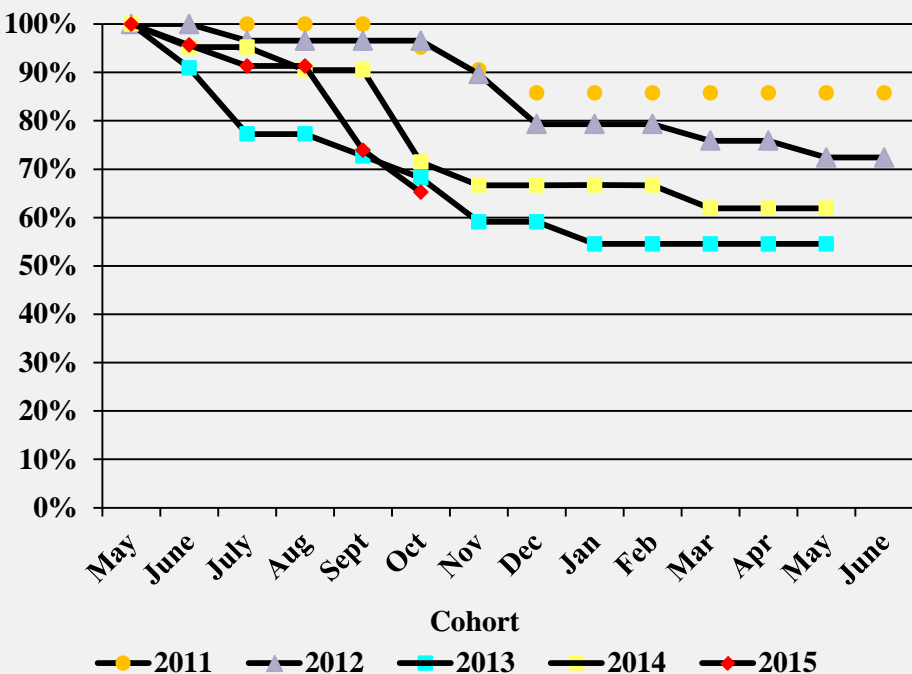
Calf Survival - Without Wolf Control



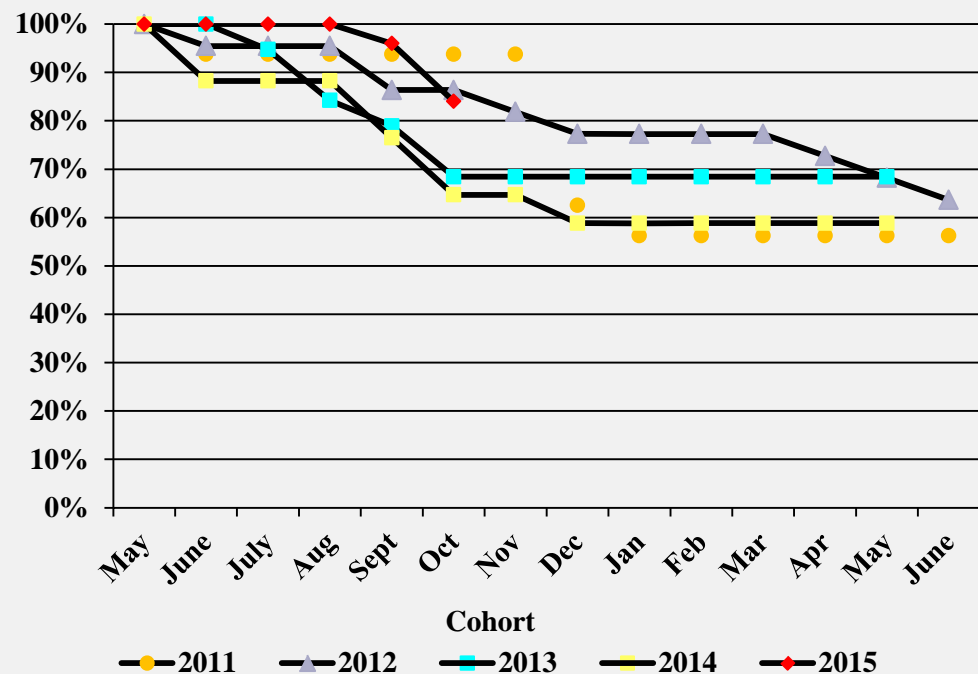
24B Upper Koyukuk Management Area

Preliminary YEARLING Survival Rate Assessment

Yearling Survival - With Wolf Control

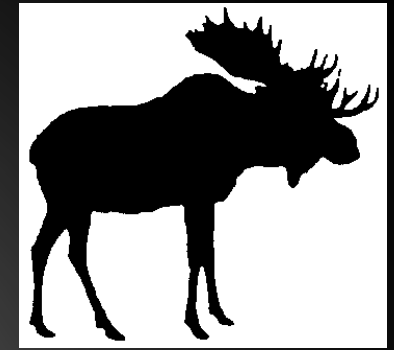
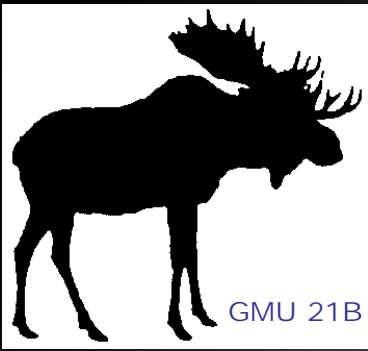


Yearling Survival - Without Wolf Control



Sidney Huntington
1915-2015
BOG Member
17 years





Galena Management Area Overview

CONCLUSION

